

Mac Mail Ver. 2.1.3

1. Click the Mail icon in the application bar

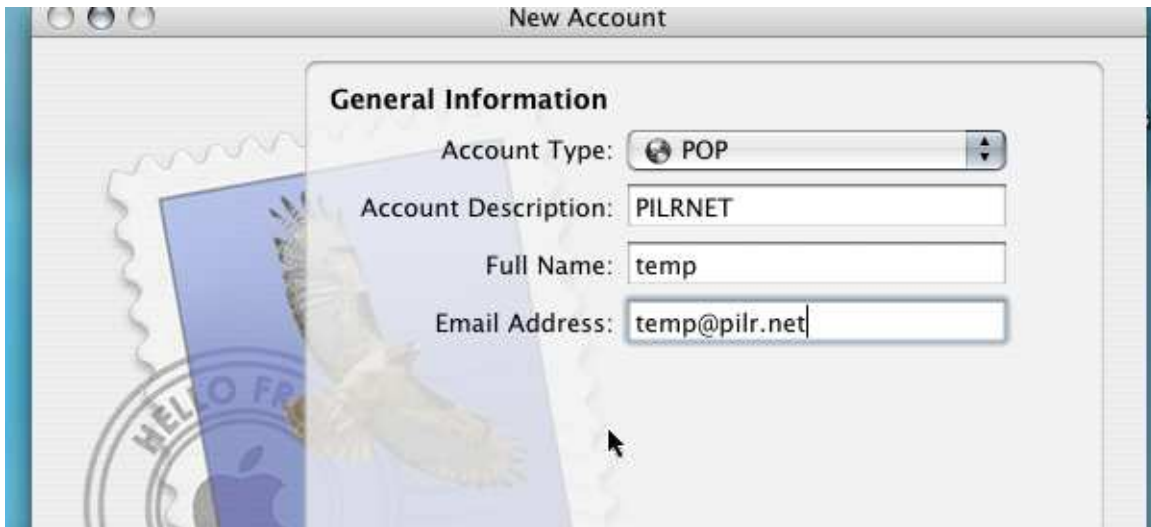


Or click on your Macintosh hard drive, click Applications, then find Mail in the list.

2. A new account wizard will come up.



3. Click Continue.
4. Under Account Type Select POP. Fill in the wanted Account Description. Type your full name and Email address and click Continue.



5. Enter the Incoming Mail Server provided to you (example mail.pilr.net). The User Name will be your full email address and enter the password provided to you and click Continue.



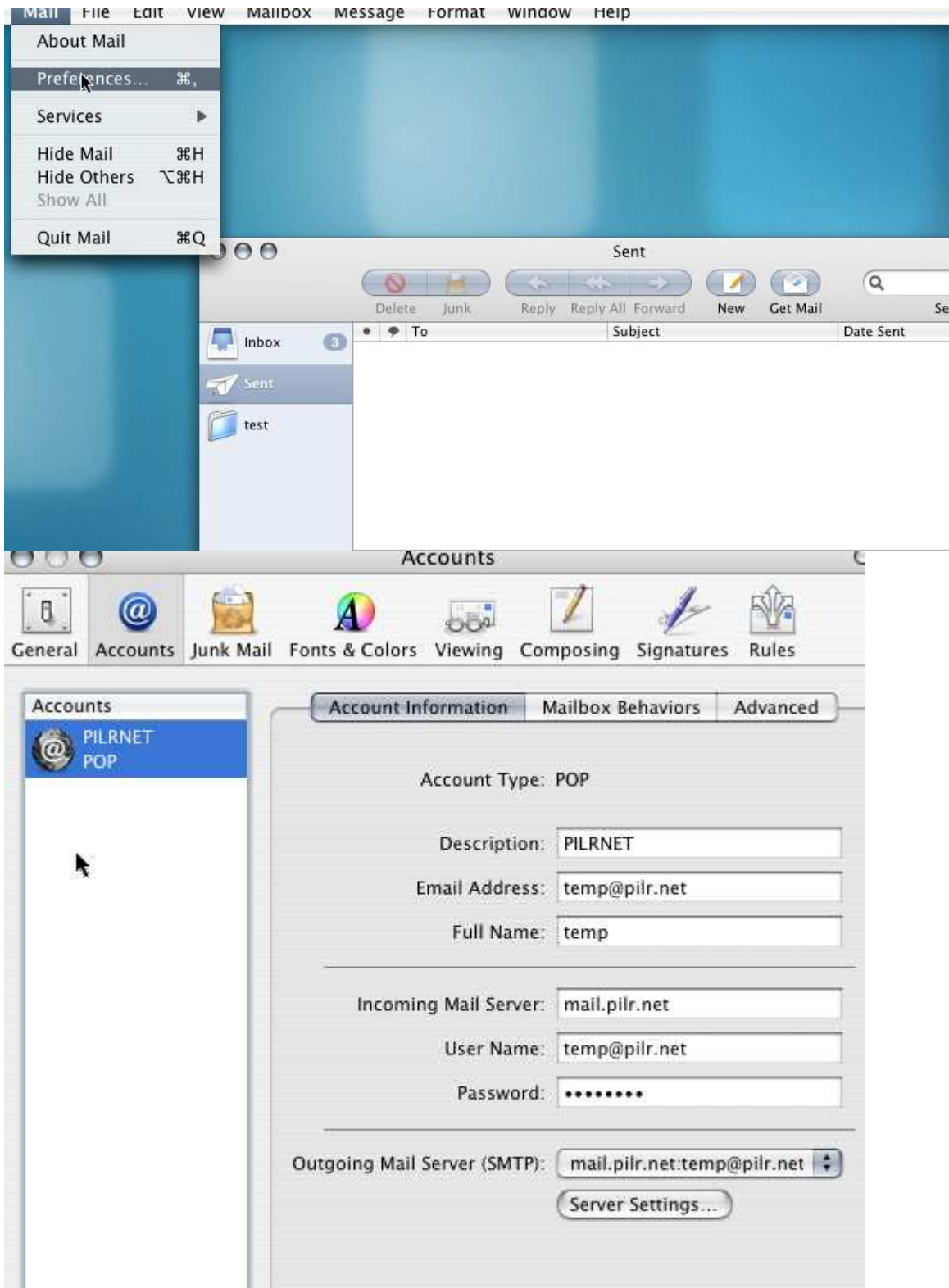
6. Enter the Outgoing Mail Server provided to you (example mail.pilr.net). The User Name will be your full email address and enter the password provided to you and click Continue.



7. The following screen will come up with the information entered. Click Continue then Done.

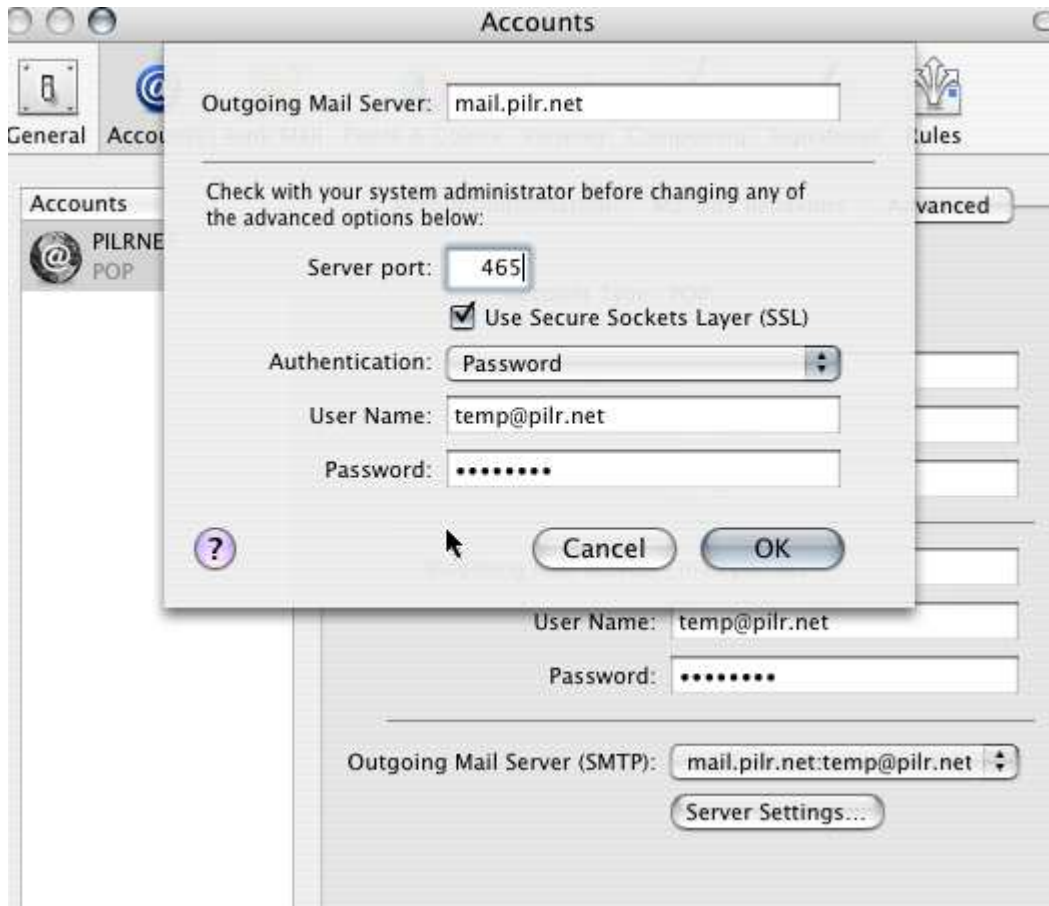


8. Click Mail>Preferences.

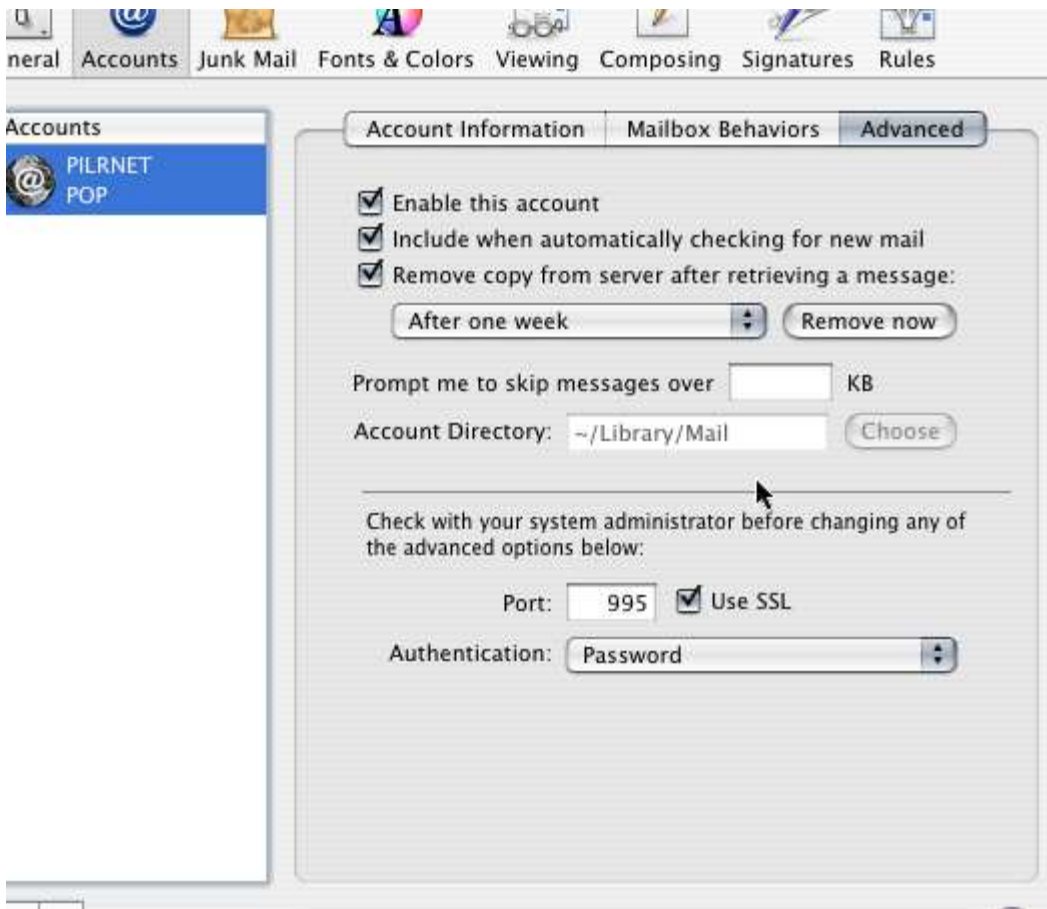


9. Click Server Settings. Change the server port to 465 and check the box that says “Use Secure Socket Layer (SSL)”. Click the arrows and select

Password as the Authentication. Enter your email as the User Name and enter your password and click OK.



10. Click on the Advanced tab and check the box that says “Use SSL” this will change the number from 110 to 995. If the number doesn’t change type the correct number in. Click the arrows and select Password for Authentication.



11. Click the X in the upper left corner of the screen.



12. When asked to save click Save.

